

“Chain Reaction”, Necklace

As seen in the May new item flyer



Created by: Mary Morton

Tools: Side or flush cutters, chain-nose pliers

Note:

This necklace uses three types of chain; one “gold ring” chain, one “sterling ring” chain, and one fine cable chain. The two “ring” chains are finished necklace chains, and will have to be cut several times, to create the links mentioned below.

Before you begin, cut four gold rings “out” of the gold necklace, you’ll want four uncut rings, and two cut rings for this project.

To make this design:

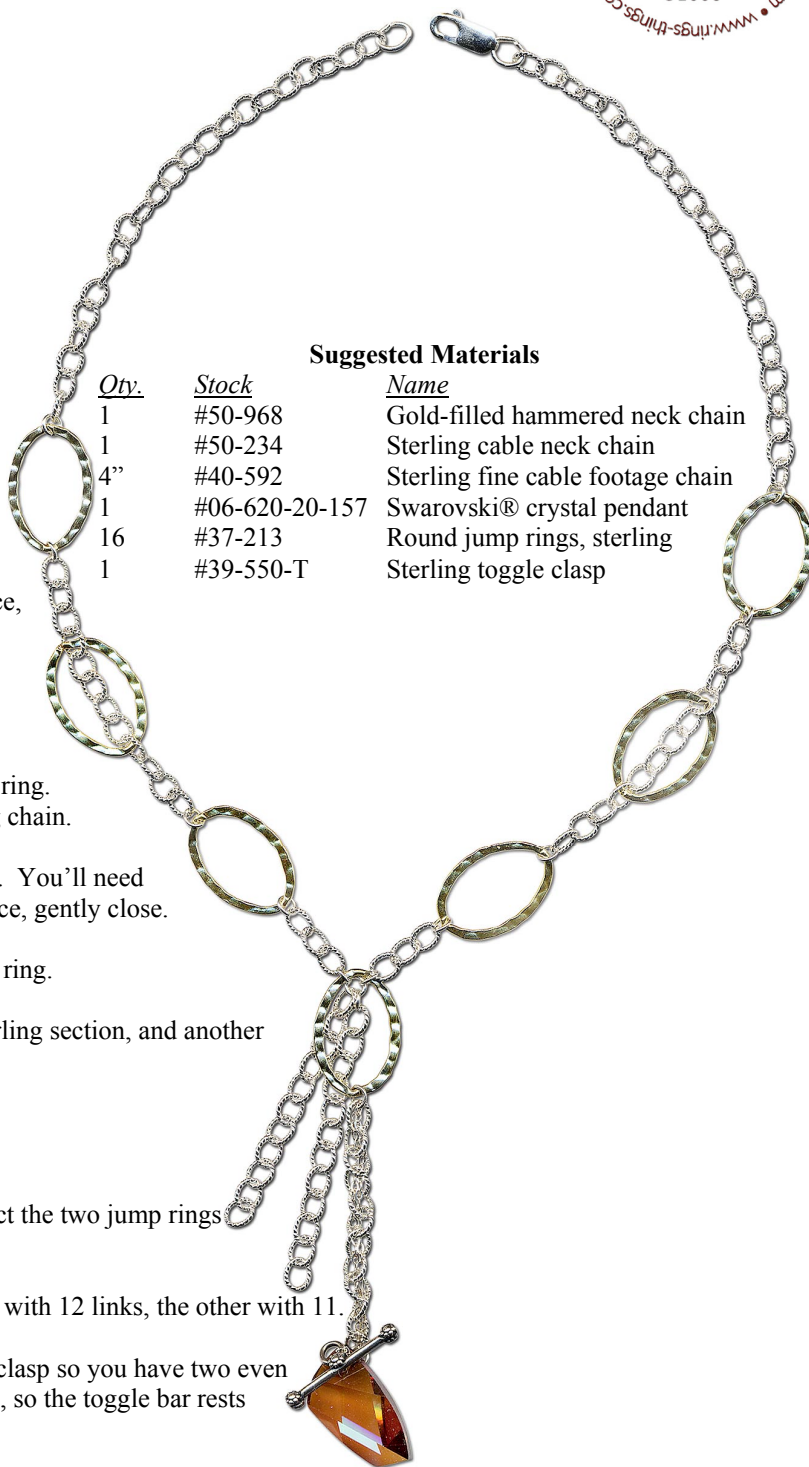
1. From the clasp, cut 3.5” (about 23 links).
2. Attach a jump ring to the last link, then add one uncut gold ring. Add a jump ring, then add a 12-link section of the sterling ring chain.
3. Add one cut gold ring to the 4th and 9th link of this section. You’ll need to open the gold ring to insert it into the links. Once it is in place, gently close.
4. Add a jump ring to the last link and add another uncut gold ring.
5. Use a jump ring to connect this gold ring to a three link sterling section, and another jump ring to a final uncut gold ring.

*Repeat steps 1-5 for the opposite side of the necklace.

To make the pendant section:

1. Just above the center gold ring, use one jump ring to connect the two jump rings that you used with the final sterling links.
2. From that jump ring, attach two more sterling sections, one with 12 links, the other with 11.
3. Cut four inches of fine chain. Loop this through the toggle clasp so you have two even chain strands, then thread both strands through the crystal hole, so the toggle bar rests against the crystal.
4. Weave the fine chain through approx. 12 sterling ring links. Add a jump ring to the fine chain, and the final sterling ring. Use this same jump ring to attach to the center gold ring. Add a final jump ring behind the crystal, to secure the fine cable to the larger sterling links.

TIP: Fine chain will slip through jump rings. For the most secure jump ring, make sure you open and close rings by twisting sideways, not pulling apart.



| <u>Qty.</u> | <u>Stock</u> | <u>Name</u> |
|-------------|----------------|-----------------------------------|
| 1 | #50-968 | Gold-filled hammered neck chain |
| 1 | #50-234 | Sterling cable neck chain |
| 4” | #40-592 | Sterling fine cable footage chain |
| 1 | #06-620-20-157 | Swarovski® crystal pendant |
| 16 | #37-213 | Round jump rings, sterling |
| 1 | #39-550-T | Sterling toggle clasp |